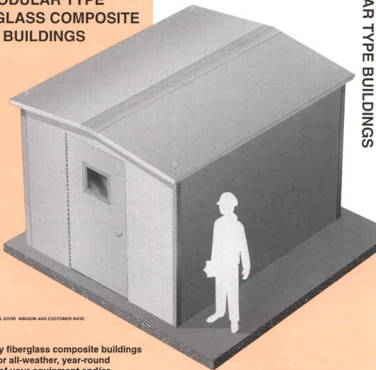




ENGINEERED FIBERGLASS COMPOSITES INC.

**ALL WEATHER
MODULAR TYPE
FIBERGLASS COMPOSITE
BUILDINGS**



SHOWN WITH OPTIONAL DOOR, WINDOW AND CUSTOMER BASE.

High quality fiberglass composite buildings designed for all-weather, year-round protection of your equipment and/or instrumentation.

Corrosion resistant materials of construction for long life.

Modular type construction for flexibility and variations in sizing and design.

Virtually maintenance free.

Insulated to reduce heating/cooling costs.

Light weight for easy installation.

Numerous sizes and optional equipment items are available to meet your requirements.

Fast delivery on many sizes.

EFC
MODULAR TYPE BUILDINGS



APPLICATIONS

EFC all-weather, modular type fiberglass reinforced polyester buildings are well suited to house and protect equipment for a wide variety of applications such as:

- Chlorination and dechlorination systems
- Chemical and polymer feed systems
- Analyzer equipment
- Sampling equipment
- Pollution monitoring equipment
- Electronic and communications equipment
- Marine and fire fighting equipment
- Pumps, motors and generators
- Safety showers

CONSTRUCTION

EFC all-weather modular type fiberglass reinforced polyester building panels are fabricated of composite construction consisting of:

High grade fiberglass reinforced plastic sheeting material which is fastened and bonded to each side of a structural wooden framework.

Fiberglass sheeting material is USDA accepted, has a super-tough (superior impact resistance), nonporous surface with a textured (pebble type) finish. Standard sheeting material is .090" thick with white color pigmented throughout its entire thickness. An ultraviolet stabilizer is added to retard discoloration.

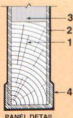
1 1/2" thick, class 1, flame-resistant, polyisocyanurate foam insulation which is injected into the panels, between the fiberglass sheeting material. Insulation is closed cell type, 2.0#/cu.ft. density, having a K-factor of .14 BTU-in/hr-ft²-F and an R-value of 10.65. Insulation is chemically bonded to structural framework and fiberglass sheeting material.

PVC trim which is bonded to the perimeter edges of panel to completely seal panel from moisture and insects.

CHARACTERISTICS

EFC all-weather, modular type fiberglass reinforced polyester buildings have the following characteristics:

- | | |
|----------------------------------|-------------------|
| Insulated composite construction | Economical |
| Corrosion resistant | Rugged |
| U.V. resistant | Light weight |
| Virtually maintenance free | Easy installation |



LEGEND

1. STRUCTURAL WOODEN FRAMEWORK.
2. HIGH GRADE FRP SHEETING MATERIAL.
3. 1 1/2" THICK POLYISOCYANURATE FOAM INSULATION.
4. PERIMETER PVC TRIM.
5. FIBERGLASS DOOR FRAME.
6. STAINLESS STEEL PIANO HINGE.
7. NEOPRENE SPONGE RUBBER GASKET.
8. STAINLESS STEEL BASE MOUNTING FLANGE.
9. 3/8"x1 1/2" STAINLESS STEEL LAG SCREW.
10. 1/2"x2" NEOPRENE BASE MOUNTING GASKET.

STANDARD FEATURES/EQUIPMENT

Peaked or sloped roof with 2" overhang all around and four (4) cadmium plated lifting eyes.

White color (painting not required).

Insulated with 1 1/2" thick polyisocyanurate foam.

Single door, 36" wide X 78" high (O.I.C.), flush-fitting, composite construction - see door construction hardware.

Non-corrosive fasteners, stainless steel if exposed. Stainless steel base mounting flanges, predrilled for 1/2" diameter anchor bolts.

Closed cell neoprene rubber base mounting gasket. Designed to withstand 90 MPH wind load and 30 PSF snow load.

Preassembled prior to shipment - can ship completely assembled or in knocked-down form for reassembly by others.

DOOR CONSTRUCTION/HARDWARE

Door is fabricated of molded one-piece composite construction with 1 1/2" thick polyisocyanurate foam insulation.

Standard single door is 36" wide X 78" high (O.I.C.) and is flush-fitting.

Door frame is of molded one-piece fiberglass construction and is bonded to building panel.

Standard Door hardware consists of:

Continuous stainless steel piano hinge.

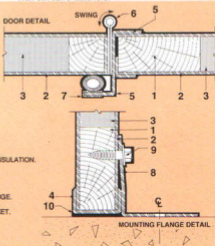
Plated safety stop (crash) chain.

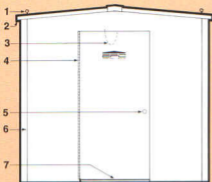
Stainless steel cylindrical lockset.

Neoprene sponge rubber gasket (weather-stripping).

Stainless steel threshold with neoprene gasket.

Non-corrosive fasteners.





Front View Model #EFC-96x
(Shown with a peaked roof).

LEGEND

1. CADMIUM PLATED LIFTING EYE - FOUR (4) PROVIDED.
2. 2" ROOF OVERHANG - TYPICAL ALL AROUND.
3. PLATED SAFETY STOP CHAIN.
4. CONTINUOUS STAINLESS STEEL PIANO HINGE.
5. STAINLESS STEEL CYLINDRICAL LOCKSET.
6. PVC TRIM FOR CORNER TO CORNER CONNECTIONS.
7. STAINLESS STEEL THRESHOLD WITH NEOPRENE GASKET.

STANDARD SIZES AND WEIGHTS			Basic Weight	Shipping Weight	
Model #	Wide x Deep x High	(lbs.)	(lbs.)	Asmbld.	K-D
EFC-48x48	4'-0" x 4'-0" x 7'-4"	385	455	485	
EFC-48x72	4'-0" x 6'-0" x 7'-4"	480	555	595	
EFC-48x96	4'-0" x 8'-0" x 7'-4"	565	650	690	
EFC-48x120	4'-0" x 10'-0" x 7'-4"	660	755	795	
EFC-48x144	4'-0" x 12'-0" x 7'-4"	755	860	905	
EFC-48x168	4'-0" x 14'-0" x 7'-4"	1045	1180	1245	
EFC-72x48	6'-0" x 4'-0" x 7'-5"	485	580	600	
EFC-72x72	6'-0" x 6'-0" x 7'-5"	580	685	705	
EFC-72x96	6'-0" x 8'-0" x 7'-5"	685	790	820	
EFC-72x120	6'-0" x 10'-0" x 7'-5"	790	895	940	
EFC-72x144	6'-0" x 12'-0" x 7'-5"	885	1000	1045	
EFC-72x168	6'-0" x 14'-0" x 7'-5"	1195	1330	1410	
EFC-96x48	8'-0" x 4'-0" x 7'-6"	580	665	705	
EFC-96x72	8'-0" x 6'-0" x 7'-6"	695	790	830	
EFC-96x96	8'-0" x 8'-0" x 7'-6"	800	905	950	
EFC-96x120	8'-0" x 10'-0" x 7'-6"	925	1045	1085	
EFC-96x144	8'-0" x 12'-0" x 7'-6"	1145	1280	1355	
EFC-96x168	8'-0" x 14'-0" x 7'-6"	1350	1500	1585	
EFC-120x48	10'-0" x 4'-0" x 7'-7"	670	765	805	
EFC-120x72	10'-0" x 6'-0" x 7'-7"	795	900	945	
EFC-120x96	10'-0" x 8'-0" x 7'-7"	920	1040	1080	
EFC-120x120	10'-0" x 10'-0" x 7'-7"	1140	1230	1345	
EFC-120x144	10'-0" x 12'-0" x 7'-7"	1375	1475	1600	
EFC-120x168	10'-0" x 14'-0" x 7'-7"	1570	1680	1815	
EFC-144x48	12'-0" x 4'-0" x 7'-8"	775	880	925	
EFC-144x72	12'-0" x 6'-0" x 7'-8"	900	1015	1060	
EFC-144x96	12'-0" x 8'-0" x 7'-8"	1110	1245	1315	
EFC-144x120	12'-0" x 10'-0" x 7'-8"	1275	1375	1505	
EFC-144x144	12'-0" x 12'-0" x 7'-8"	1500	-	1755	
EFC-144x168	12'-0" x 14'-0" x 7'-8"	1725	-	2005	
EFC-168x48	14'-0" x 4'-0" x 7'-9"	875	1000	1035	
EFC-168x72	14'-0" x 6'-0" x 7'-9"	1020	1155	1195	
EFC-168x96	14'-0" x 8'-0" x 7'-9"	1240	1390	1450	
EFC-168x120	14'-0" x 10'-0" x 7'-9"	1415	1525	1655	
EFC-168x144	14'-0" x 12'-0" x 7'-9"	1650	-	1920	
EFC-168x168	14'-0" x 14'-0" x 7'-9"	1875	-	2175	

Notes:

1. Above sizes are overall exterior dimensions.
2. Standard eave height (for buildings with a peaked roof) is 7'-0". Standard slope of roof is 1": 12".
3. All dimensions are available in nonstandard sizes.
4. Standard overall wall thickness is 2" (at perimeter).

ORDERING INFORMATION

When ordering please provide the following information:

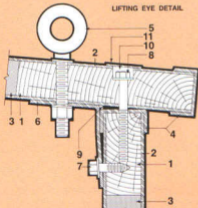
Model # and size of building.

Color of building.

Door swing.

Optional equipment items - please furnish drawing detailing locations.

If your building was quoted direct by EFC please advise quotation number. This will greatly reduce the amount of information required during order placement.



LEGEND

1. STRUCTURAL WOODEN FRAMEWORK.
2. HIGH GRADE FRP SHEETING MATERIAL.
3. 1 1/2" THICK POLYISOCYANURATE FOAM INSULATION.
4. PERIMETER PVC TRIM.
5. CADMIUM PLATED LIFTING EYE.
6. 3"x3" STAINLESS STEEL ANGLE.
7. 3/8"x1 1/2" STAINLESS STEEL LAG SCREW.
8. 3/8"x3 1/2" NON-CORROSIVE LAG SCREW.
9. 1 1/2"x2" NEOPRENE SPONGE RUBBER GASKET.
10. RTV MARINE GRADE RUBBER SILICONE.
11. FIBERGLASS ROOF PLUG.

OPTIONAL EQUIPMENT

- Color selection (white is standard)
- Flame resistant construction
- Insulated fiberglass floor
- Wall partition
- Additional doors
- Door panic hardware (replaces standard lockset)
- Door closure (replaces standard stop chain)
- Door window (12" x 12" Lexan is standard)
- Fixed or sliding wall window
- Exhaust fan (CFM as required) with shutter and a fiberglass canopy with insect screen
- Air intake vent (size as required)-manually adjustable, automatic or motorized, with a fiberglass canopy with insect screen
- Lighting - incandescent or fluorescent
- Control switches:
 - Toggle switch - interior or exterior
 - Door activated micro (limit) switch
 - Remote thermostat
- Heater with built-in thermostat (wattage as required)
- Air conditioner (BTU's as required)
- Duplex outlet receptacle - interior or exterior
- Circuit breaker load center with branch breakers (amps, type, size, etc., as required)
- Wiring in rigid PVC schedule 40 conduit (or as required)
- Fiberglass shelving
- Mounting channel
- Reinforcement in wall or ceiling
- Cut-out opening in wall or ceiling
- Stainless steel lifting eyes
- Stainless steel anchor bolts
- Explosion proof electrical equipment
- Other equipment as required by customer

SAMPLE SPECIFICATIONS

A modular type fiberglass building shall be supplied and installed to house the _____ as shown on the specification drawings.

The building size shall be _____ wide X _____ deep X _____ high overall (_____ high at eaves or back wall). Roof to be peaked (or sloped), have a 2" overhang all around and be provided with four (4) cadmium plated lifting eyes.

Building shall be of fiberglass composite construction. Building panels shall be fabricated from a structural wooden framework having high grade fiberglass reinforced plastic sheeting material (min. .090" thick) fastened and bonded to each side. Panels shall be insulated with 1 1/2" thick class 1, flame resistant foam having a density of 2.0#/cu. ft., K-factor of .14 and an R-value of 10.65. Insulation shall be chemically bonded to structural framework and fiberglass sheeting material. PVC trim shall be bonded to perimeter edges of panels to completely seal panels against moisture and insects. All fasteners required to connect building panels together shall be non-corrosive.

Color of building to be standard white. White color shall be pigmented throughout the thickness of the fiberglass sheeting material. An ultraviolet stabilizer shall be added to retard discoloration.

Building shall be provided with a 36" wide X 78" high flush-fitting single door. Door to be of fiberglass composite construction, be mounted within an integral fiberglass frame, be provided with neoprene gasket (weather-stripping) and non-corrosive hardware - see door construction/hardware for standard door hardware.

Building shall be supplied with an adequate number of stainless steel base mounting flanges, predrilled for 1/2" diameter anchor bolts (anchor bolts to be supplied and installed by contractor). Closed cell neoprene rubber base mounting gasket shall be furnished to seal building to foundation.

Building shall be designed to withstand 90 MPH wind load and 30 PSF snow load. Building shall be preassembled at factory and shipped in assembled form (or in knocked-down form for reassembly by contractor at job-site).

Optional equipment to include:

Building shall be model #EFC - _____ X _____ as manufactured by Engineered Fiberglass Composites Inc., New Lisbon, WI.



CONTACT EFC FOR OTHER PRODUCT LITERATURE



ENGINEERED FIBERGLASS COMPOSITES INC.

301 BICKFORD STREET

NEW LISBON, WISCONSIN 53950-1524

608-562-5900 FAX 608-562-5909